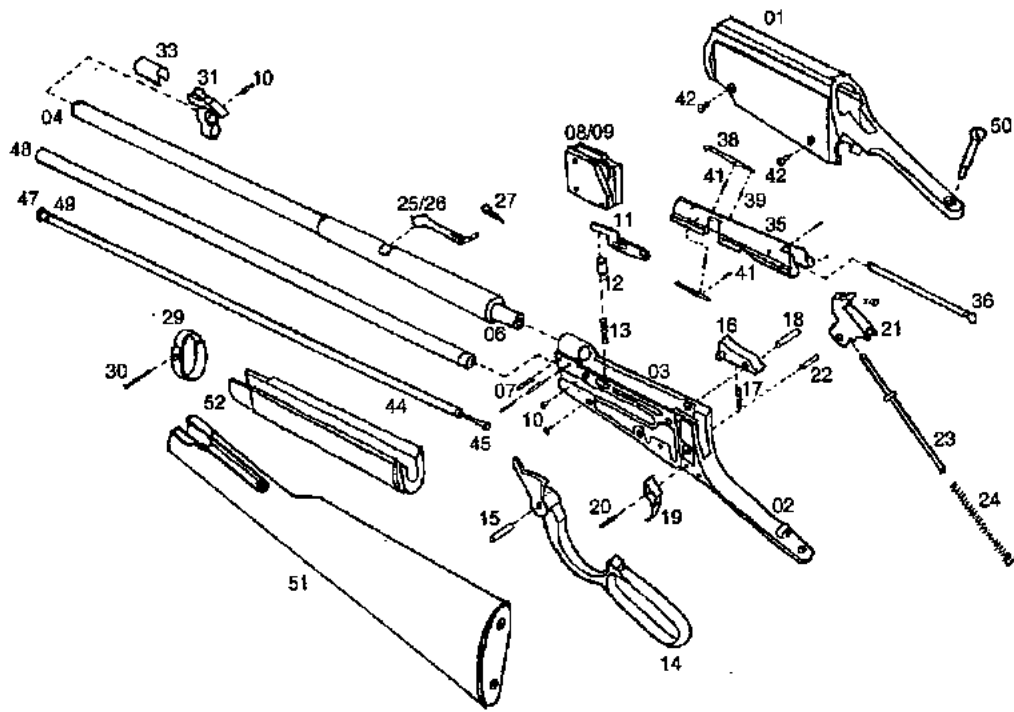


ILLUSTRATION OF PARTS



LIST OF PARTS

| | | | | | | | |
|--------------|--------------------|--------------|---------------------|-----------|-------------------|-----------|-----------------------|
| 01 | Receiver | 15 | Lever Pin | 29 | Barrel Band | 44 | Inner Mag Tube |
| 02 | Cover | 16 | Lock Bar | 30 | Barrel Band Screw | 45 | Magazine Spring Guide |
| 03 | Carrier Axle | 17 | Locking Bar Spring | 31 | Front Sight | 46 | Magazine Spring |
| 04 | Barrel | 18 | Locking Bar Pin | 33 | Sight Cover | 47 | Magazine Button |
| 06 | Cylinder Pin | 19 | Trigger | 35 | Bolt | 48 | Outer Tube |
| 07 | Taper Pin | 20 | Trigger Spring | 36 | Firing Pin | 49 | Notch Pin |
| 08/09 | Carrier | 21 | Hammer | 37 | Firing Pin Spring | 50 | Stock Screw |
| 10 | Carrier Screw | 22 | Hammer Pin | 38 | Extractor | 51 | Buttstock Assembly |
| 11 | Carrier Feed Lever | 23 | Hammer Guide | 39 | Spring | 52 | Forend |
| 12 | Carrier Tube | 24 | Hammer Spring | 40 | Ejector | 54 | Trigger Pin |
| 13 | Carrier Spring | 25/26 | Rear Sight | 41 | Ejector Pin | | |
| 14 | Lever | 27 | Rear Sight Elevator | 42 | Cover Screw | | |